

**Apoptosis Research Antibody Assembly kit**  
**Apoptosis Research Antibody Assembly kit**  
**Catalog # AP93977****Specification****Apoptosis Research Antibody Assembly kit - Product Information**

Application	<b>WB</b>
Host	<b>Rabbit</b>
Clonality	<b>Polyclonal</b>
Physical State	<b>Liquid</b>
Isotype	<b>IgG</b>
<b>Purity</b>	
affinity purified by Protein A	
Buffer	<b>0.01M TBS (pH7.4) with 1% BSA, 0.02% Proclin300 and 50% Glycerol.</b>
Important Note	<b>This product as supplied is intended for research use only, not for use in human, therapeutic or diagnostic applications.</b>

**Background Descriptions**

Apoptosis is the most common type of programmed cell death. The signal transduction of apoptosis involves the processing and activation of cysteinase caspase and the alternative mitochondrial pathway mediated by pro-apoptosis factors. Among them, the caspase mediating the initiation of apoptosis includes caspase-8,-9,-10 and -12, in which caspase-8 is mainly involved in tumor necrosis factor receptor (TNFR) superfamily death receptor mediated extrinsic apoptosis pathway. Caspase-3,-6 and -7 mediate downstream effects, including cleavage of cytoskeleton and chromatin, and eventually lead to apoptosis. In addition, mitochondria also play key roles in activation of apoptosis. Different upstream stimuli promote the binding of pro-apoptosis factors to the outer membrane of mitochondria through signal transduction, which leads to the change of mitochondrial permeability and the release of inner mitochondrial membrane (IMM) proteins (such as cytochrome C and other proteins). Cytochrome C coupling activation of caspase-9 can further activate key downstream effector caspases. Apoptosis Research Antibody Assembly Kit is one economical package of selected antibodies for most representative apoptosis signaling pathway-related proteins, bcl-2, bax, Caspase-3, Caspase-9, Cytochrome C. These antibodies have been tested in a variety of applications and species. For specific application information of different antibodies, please refer to each individual antibody datasheet. Apoptosis Research Antibody Assembly kitBcl-2 Recombinant Rabbit mAb(bsm-61074R)Bax Recombinant Rabbit mAb(bsm-52316R)Caspase-3 Recombinant Rabbit mAb(bsm-61071R)Caspase-9 Recombinant Rabbit mAb(bsm-52566R) Cytochrome C Recombinant Rabbit mAb(bsm-52050R)

**Apoptosis Research Antibody Assembly kit - Additional Information****Dilution**

WB~1:1000

**Format**

0.01M TBS(pH7.4), 0.09% (W/V) sodium azide and 50% Glyce

**Storage**

Store at -20 °C for one year. Avoid repeated freeze/thaw cycles. When reconstituted in sterile pH 7.4 0.01M PBS or diluent of antibody the antibody is stable for at least two weeks at 2-4 °C.

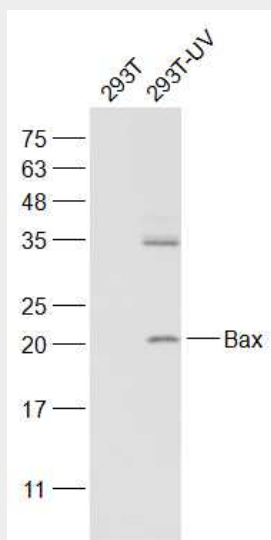
## Apoptosis Research Antibody Assembly kit - Protein Information

### Apoptosis Research Antibody Assembly kit - Protocols

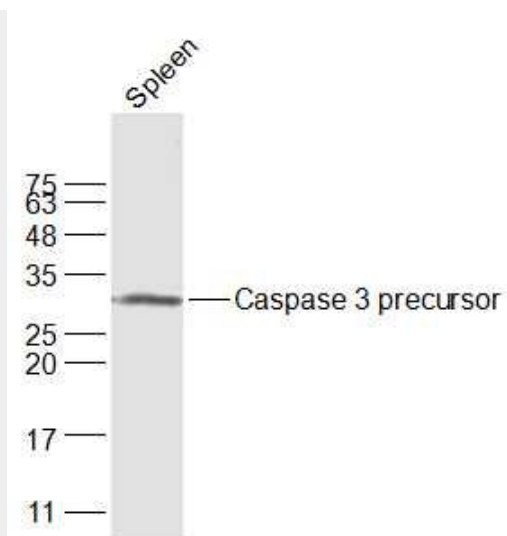
Provided below are standard protocols that you may find useful for product applications.

- [Western Blot](#)
- [Blocking Peptides](#)
- [Dot Blot](#)
- [Immunohistochemistry](#)
- [Immunofluorescence](#)
- [Immunoprecipitation](#)
- [Flow Cytometry](#)
- [Cell Culture](#)

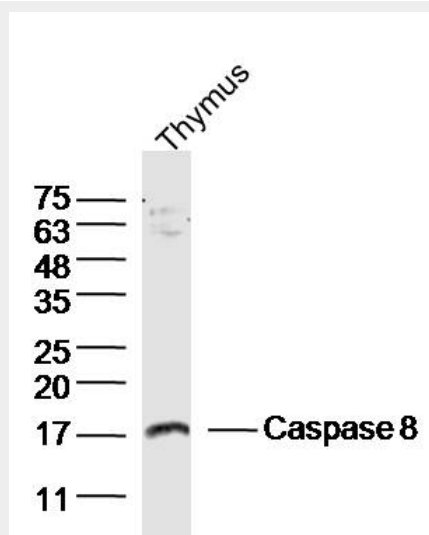
### Apoptosis Research Antibody Assembly kit - Images



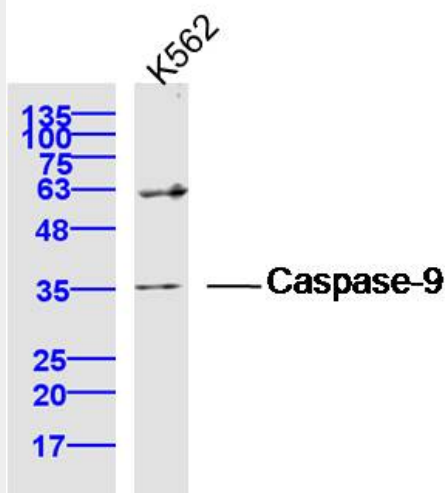
Primary: Anti-Bax (bsm-33279M) at 1/1000 dilution Sample: 293T(Human) Cell Lysate at 30 ug  
293T-UV(Human) Cell Lysate at 30 ug Secondary: IRDye800CW Goat Anti-Rabbit IgG at 1/20000  
dilution Predicted band size: 21 kD Observed band size: 21 kD



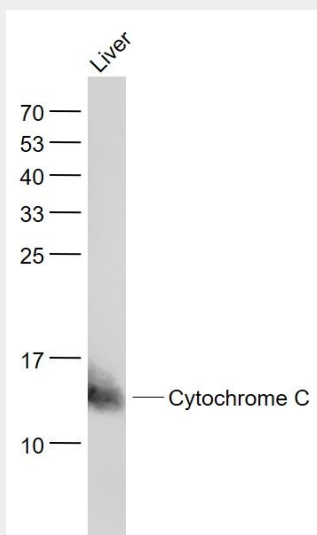
Primary: Anti-Caspase 3 precursor (bs-2593R) at 1/1000 dilution Sample: Spleen (Mouse) Lysate at 40 ug  
Secondary: IRDye800CW Goat Anti-Rabbit IgG at 1/20000 dilution Predicted band size: 28 kD  
Observed band size: 28 kD



Primary: Anti- Caspase 8 (bs-20613R) at 1/300 dilution Sample: Thymus (Mouse) Lysate at 40 ug  
Secondary: IRDye800CW Goat Anti-Rabbit IgG at 1/20000 dilution Predicted band size: 12,55 kD  
Observed band size: 17 kD



Primary: Anti-Caspase-9 (bs-20773R) at 1/300 dilution Sample: K562 Cell (Human) Lysate at 40 ug Secondary: IRDye800CW Goat Anti-Rabbit IgG at 1/20000 dilution Predicted band size: 35/50 kD Observed band size: 35 kD



Primary: Anti- Cytochrome C (bsm-52050R) at 1/1000 dilution Sample: Liver (Mouse) Lysate at 40 ug Secondary: IRDye800CW Goat Anti-Rabbit IgG at 1/20000 dilution Predicted band size: 12.8/26 kD Observed band size: 12.8 kD

### Apoptosis Research Antibody Assembly kit - Background

This product as supplied is intended for research use only, not for use in human, therapeutic or diagnostic applications.